



# MBA

MASTER OF BUSINESS ADMINISTRATION

2023  
EMPLOYMENT  
REPORT



MENDOZA COLLEGE  
OF BUSINESS



UNIVERSITY OF  
NOTRE DAME

# THE NOTRE DAME MBA 2023 EMPLOYMENT REPORT

## JOHN ROONEY

Senior Director,  
Graduate Business Career Development  
& Alumni Relations



"The Career Development team is pleased to report another year of strong career outcomes. Our students continue to demonstrate why many of the world's top companies come to Notre Dame to access our unique blend of talent and leadership. I want to thank our corporate partners and dedicated alumni that were instrumental in helping our students. Finally, my thanks to the dedicated Career Development team for the support they give our students and employers every day."

### CLASS OF 2023

# 91%

JOBS OFFERED  
BY 3 MONTHS  
AFTER GRADUATION

# 90%

JOBS ACCEPTED  
BY 3 MONTHS  
AFTER GRADUATION

# \$172,098

MEAN SALARY  
PLUS BONUS

# \$165,000

MEDIAN SALARY  
PLUS BONUS

### INVESTMENT BANKING

# \$225K

MEDIAN SALARY  
PLUS BONUS

### STRATEGY CONSULTING

# \$215K

MEDIAN SALARY  
PLUS BONUS

### TECHNOLOGY

# \$165.5K

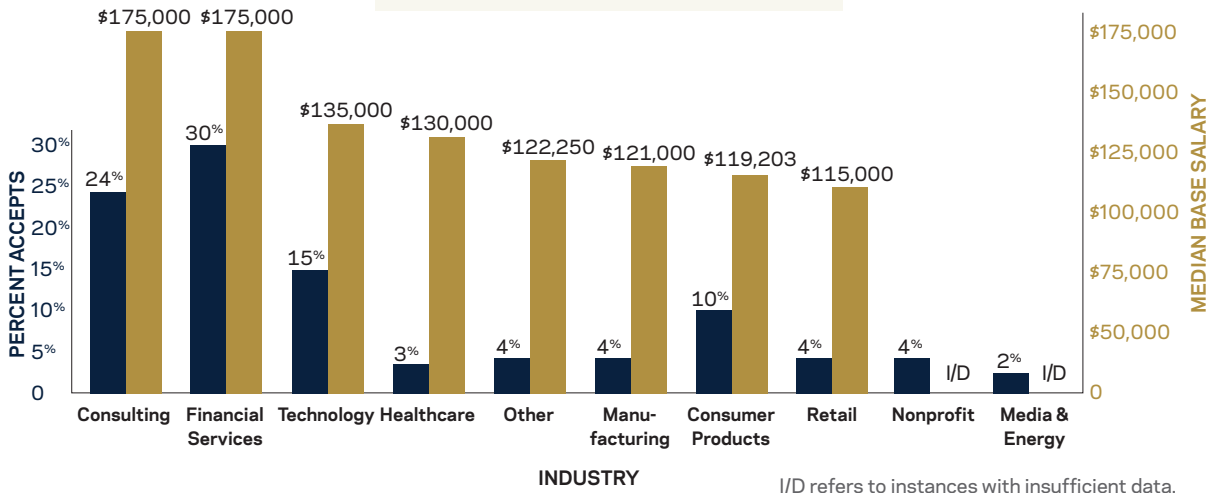
MEDIAN SALARY  
PLUS BONUS

*GROW THE GOOD IN BUSINESS™*

**\$130K** MEDIAN  
BASE SALARY

**\$35K** MEDIAN  
BONUS → **17%** INCREASE OVER  
2022 MEDIAN BONUS

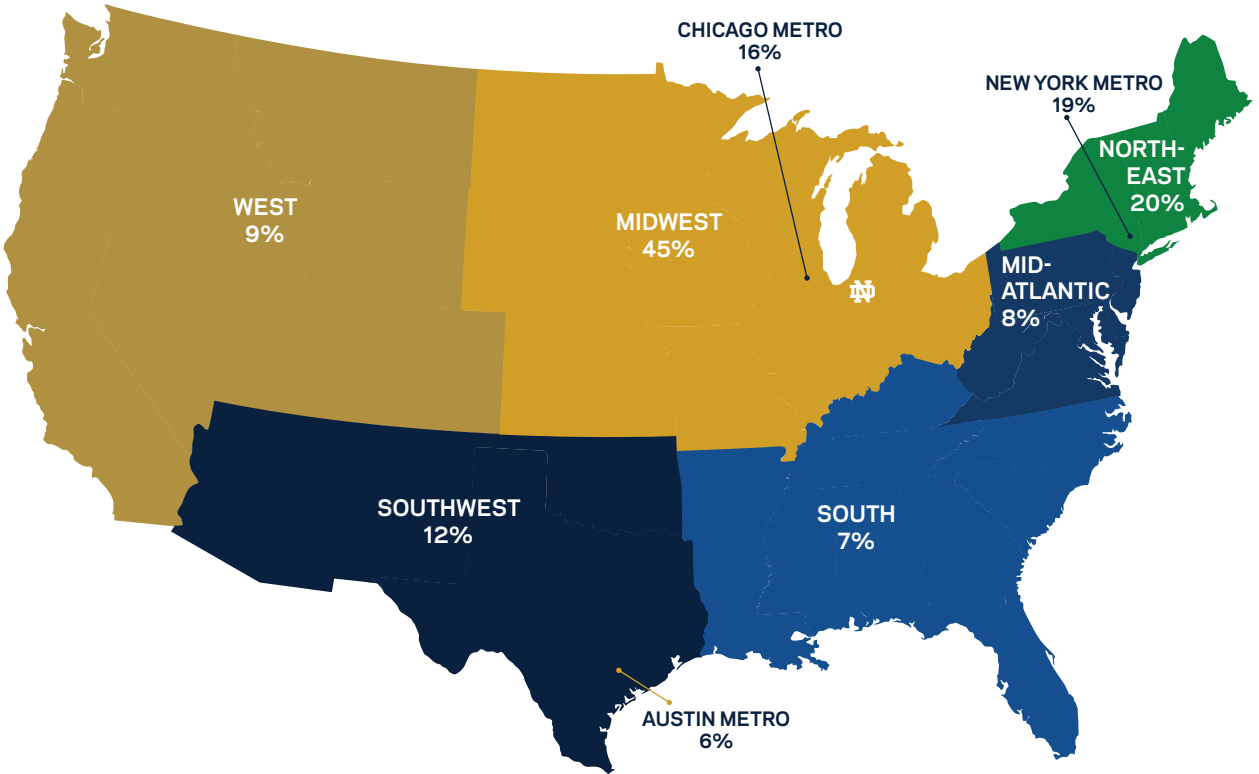
### COMPENSATION BY INDUSTRY



### COMPENSATION BY FUNCTION

FUNCTION	PERCENT ACCEPTS	MEDIAN BASE SALARY
<b>CONSULTING</b>	<b>29.9%</b>	<b>\$175,000</b>
Strategy/Management	16.8%	\$175,000
Advisory	5.6%	\$147,500
Internal	3.7%	\$125,040
IT	1.9%	I/D
HR	1.9%	I/D
<b>FINANCE/ACCOUNTING</b>	<b>36.4%</b>	<b>\$135,000</b>
Investment Banking	17.8%	\$175,000
Corporate Finance/Treasury	3.7%	\$122,500
Corporate Finance/Financial Analysis	11.2%	\$121,500
Investment Management	1.9%	I/D
Other	1.8%	I/D
<b>GENERAL MANAGEMENT</b>	<b>5.6%</b>	<b>\$125,000</b>
<b>OPERATIONS/LOGISTICS</b>	<b>8.4%</b>	<b>\$121,500</b>
General Management	2.8%	\$142,800
Production	2.8%	\$120,000
Logistics	2.8%	\$115,000
<b>MARKETING/SALES</b>	<b>10.3%</b>	<b>\$120,000</b>
Product Management	3.7%	\$130,000
Brand Management	1.9%	I/D
Sales	1.9%	I/D
Retail	1.9%	I/D
Other	0.9%	I/D
<b>OTHER</b>	<b>9.3%</b>	<b>\$92,300</b>

FULL-TIME EMPLOYMENT BY REGION AND METRO AREA



<p><b>REGION</b></p> <hr/> <p><b>MIDWEST</b> Chicago, Minneapolis, Cincinnati, Detroit</p> <hr/> <p><b>WEST</b> Los Angeles, San Jose, Seattle</p> <hr/> <p><b>NORTHEAST</b> New York</p>	<p><b>REGION</b></p> <hr/> <p><b>MID-ATLANTIC</b> Washington, Philadelphia</p> <hr/> <p><b>SOUTH</b> Atlanta, Charlotte</p> <hr/> <p><b>SOUTHWEST</b> Austin, Dallas, Houston</p>
---	---



**VERLINDA ATTIPOE**

Two-Year MBA  
Class of 2023  
Associate,  
McKinsey & Company

“My recruitment success at ND can be attributed to the strong alumni network and exceptional career support. In navigating the complex world of consulting recruitment, I found that connecting with Notre Dame alumni (undergraduate & graduate) was extremely helpful and was inspiring to witness their unwavering commitment to helping me flourish. The guidance and mentorship offered by the career development team also helped hone my storytelling skills and provided me with invaluable resources such as the opportunity to interview with an ex-McKinsey consultant. This experience provided me with invaluable insights and a deeper understanding of how to go about my case interviews.”

## TOP EMPLOYERS

amazon

Deloitte.

EY Parthenon

Google

JPMORGAN  
CHASE & CO.

pwc

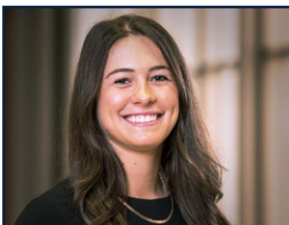
TRUIST 

## ALL EMPLOYERS

Advantage Solutions  
Amazon  
Amazon Web Services (AWS)  
American Airlines  
Air Products  
AT&T  
Autodesk  
Baird  
Barclays  
BCG  
BlackRock  
BMO Capital Markets  
Boeing  
Chewy  
Citi  
Cognizant  
Deloitte Corporate Finance  
eBay  
Ecolab  
Elevance Health  
Eli Lilly & Company  
EY  
EY Parthenon

Ferrero Group  
Fiserv  
Ford Motor Company  
Gartner  
General Motors  
Goldman Sachs  
Google  
Guggenheim Partners  
Harris Williams & Co.  
Hatch  
IBM  
IQVIA  
Jefferies  
JPMorgan Chase & Co.  
JSC Impact  
Kellogg Co.  
Kohl's  
Alan B Lancz and Associates  
LEK Consulting  
Lincoln International  
Mattel  
McKinsey & Company  
Medtronic

NextEra Energy  
PPG  
Principal Financial Group  
Procter & Gamble  
Pulte Institute for  
Global Development  
PwC  
RWE Renewables  
SEI Consulting  
SLKone, LLC  
South Bend Community Schools  
Tesla  
The Walt Disney Company  
Tire Rack  
TriNet Group  
Truist  
UBS  
United Airlines  
University of Notre Dame  
Walmart  
Wells Fargo  
Whirlpool Corporation

**NICOLE GARDINI**

Two-Year MBA  
Class of 2023  
Investment Banking Associate,  
Guggenheim Partners

“Support from the MBA Finance & Investments club was a key factor in securing an internship and subsequent full-time position in investment banking. Club mentors and leadership helped me navigate the complex and sometimes intense process of recruiting in the banking industry. In addition to their guidance, connecting with and receiving insights from Notre Dame alumni in the industry prepared me to be a competitive candidate for the role.”

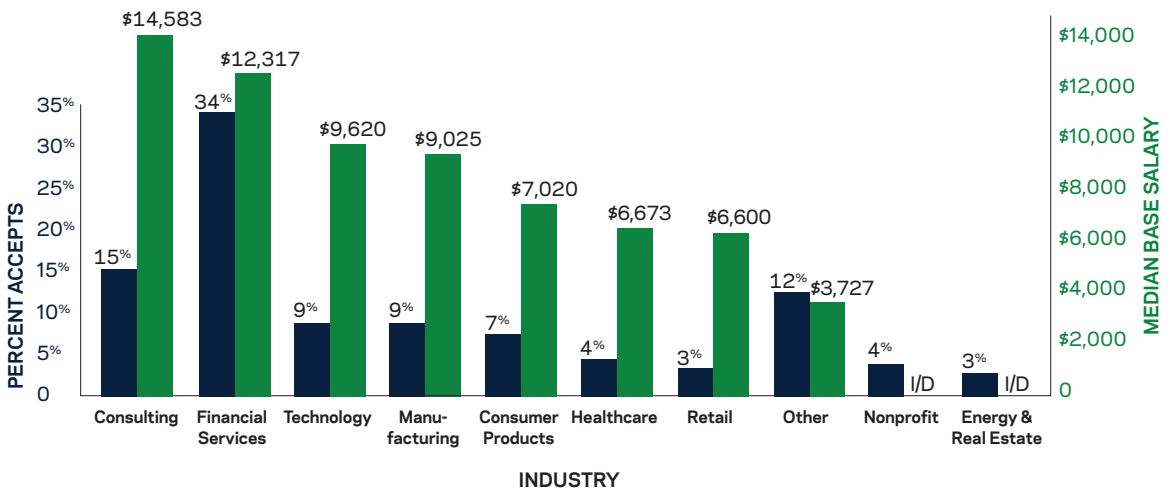
100%

JOB ACCEPTS

\$9.3K

MEDIAN BASE SALARY PER MONTH

COMPENSATION BY INDUSTRY



I/D refers to instances with insufficient data.

COMPENSATION BY FUNCTION

FUNCTION	PERCENT ACCEPTS	MEDIAN MONTHLY SALARY
CONSULTING	25.0%	\$12,083
FINANCE/ACCOUNTING	37.0%	\$12,067
OTHER	7.6%	\$7,713
GENERAL MANAGEMENT	5.4%	\$7,292
MARKETING/SALES	14.1%	\$7,183
OPERATIONS/LOGISTICS	8.7%	\$6,587
HUMAN RESOURCES	2.2%	I/D

I/D refers to instances with insufficient data.

TOP EMPLOYERS



GUGGENHEIM



JPMORGAN  
CHASE & CO.



Western & Southern  
Financial Group®

ALL EMPLOYERS

Abbott Nutrition  
Adapta Education Inc.  
Adaptive Business Solutions, LLC  
AdventHealth  
AEBetancourt  
Aguafria  
Air Products  
AlixPartners  
Amazon  
Analysis Group  
Apple  
Bain & Company  
Baird  
Bank of America  
Barilla  
Barry-Wehmiller  
Bijora Inc.  
Boeing  
Caterpillar  
Chenmark Capital Management, LLC  
Chewy  
Citibank  
ClubVMSA  
Cornhusker Capital  
Credit Suisse  
Crowe Horwath LLP  
Delek US  
Deloitte Corporate Finance  
DICK's Sporting Goods

Discover Financial Services  
Dow Chemical Company  
Ecolab  
Elevance Health  
EY  
Factory LLC  
Fiserv  
Ford Motor Company  
GE Aviation  
Goldman Sachs  
Google  
Guggenheim Partners  
Guidehouse  
HEB  
Hershey Company  
Hyland  
IBM  
IDEA Center at the  
University of Notre Dame  
International Finance Corporation - IFC  
Intrepid Phoenix Ventures  
JC consulting  
JPMorgan Chase & Co.  
Kellogg Co.  
Landmark Wealth Management Group  
LatinUs Beauty  
Microsoft  
MTS Health Partners LP  
NextGen Growth Partners

Penta Holdings, Inc.  
PepsiCo  
Piper Sandler  
Procter & Gamble  
PwC  
Rialto Capital  
Rothschild  
Santander Bank  
Siemens  
Silverpeak  
Sintokogio  
Southwest Airlines  
Stellantis  
Techstars  
The House of Lords  
The Opus Group  
Thermo Fisher Scientific  
Three Leaf Development  
Truist  
Underwriters Laboratories Inc.  
United Rentals  
University of Notre Dame  
US Soccer Federation  
Western & Southern Financial Group  
Western Alliance Bank  
Whirlpool Corporation  
Wilson Sporting Goods  
Zebra Technologies



**ANDREW SARAF**

Two Year MBA,  
Class of 2024  
MBA Intern,  
Chase Associate Program  
JPMorgan Chase

“The ND Alumni network rounded out my MBA experience by providing an unparalleled sense of support and mentorship during my career pivot from Commercial Banking to Technology. From newly minted MBAs all the way to C-Suite leadership, the ND alumni network not only prepared me to excel in my interviews, but also gave me invaluable mentorship for my career to come. They shed light on how to turn myself from just a worker into an exceptional servant leader in a major company.”



**CONTACT US**

Email: [mba.business@nd.edu](mailto:mba.business@nd.edu)

(574) 631-8488

[mendoza.nd.edu](http://mendoza.nd.edu)

MENDOZA COLLEGE  
OF BUSINESS



UNIVERSITY OF  
NOTRE DAME



**AACSB**  
International  
Accredited